



WOMEN'S HARTFORD Essential Chef Coat

BCWLZ005 | XS-3XL



4.7 oz. 65/35 poly/cotton 'lite' twill fabric

Single-breasted

Right sleeve
cell phone/notebook pocket

Cool Vent™ sides
and side seam slits

Back collar apron holder
with engraved snap tab

Left sleeve
thermometer pocket

Roll-up long sleeve with tab

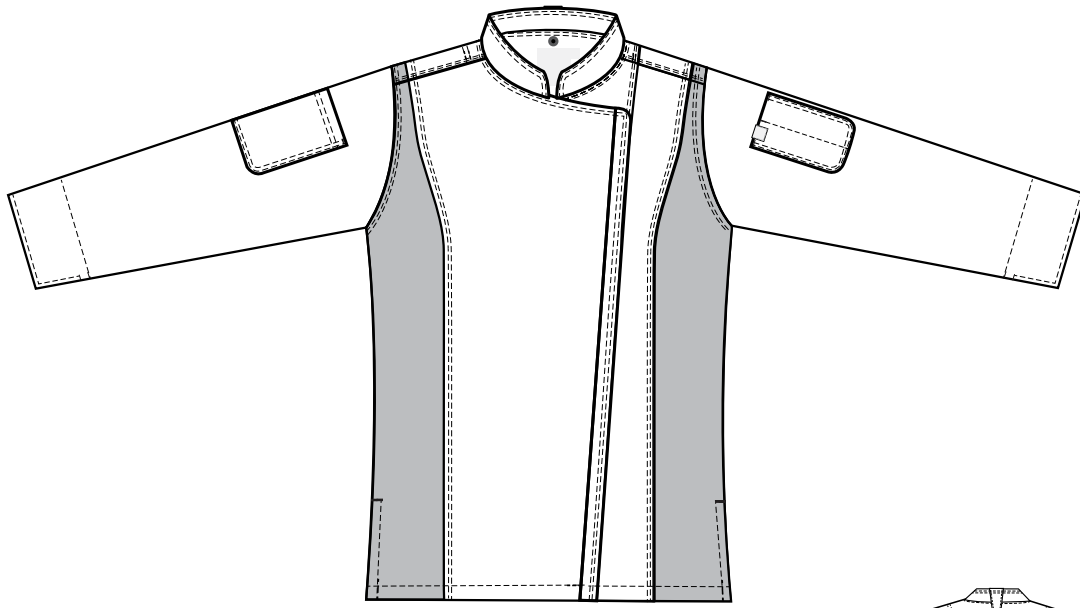
Zipper closure

WOMEN'S COATS

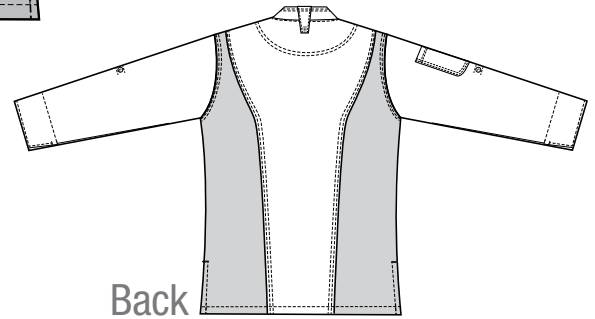
Chest (in)	30/32	34/36	38/40	42/44	46/48	50/52	54/56	58/60	62/64
Size	XS	S	M	L	XL	2XL	3XL	4XL	5XL
Chest (cm)	76/81	86/91	97/102	107/112	117/122	127/132	137/142	147/152	157/163

SF 1 Slim Fit | Updated feminine fit skims the body for a form-fitting look.

WOMEN'S
HARTFORD



Front



Back

BCWLZ005



BLK
(black)



BLU
(blue)



GRY
(gray)



WHT
(white)

- 4.7 oz. 65/35 poly/cotton 'lite' twill fabric
- Cool Vent™ sides with side seam slits
- Roll-up long sleeve with tab
- Single-breasted with zipper closure
- Back collar apron holder with engraved snap tab
- Left sleeve thermometer pocket
- Right sleeve cell phone/notebook pocket

A staple in our Essentials Collection, the Hartford's single-breasted, zippered coat offers a more tailored, feminine fit at an affordable price point. Crafted in a lightweight cotton twill with Cool Vent™ siding, the Hartford is the quintessential workhorse for your entire culinary staff. Offered in a new crisp white for summer, this coat is best worn on well, any day that ends in "y."



800.372.6621 | www.chefworks.com

Chef Works Corporate Headquarters • 12325 Kerran Street • Poway, CA 92064