

HARTFORD

Essential Chef Coat

BCLZ008 | Sizes vary by color



4.7 oz. 65/35 poly/cotton 'lite' twill fabric

Right sleeve
cell phone/notebook pocket

Single-breasted with zipper closure

Back collar apron holder
with engraved snap tab

Left sleeve
thermometer pocket

Roll-up long sleeve with tab

Cool Vent™ sides

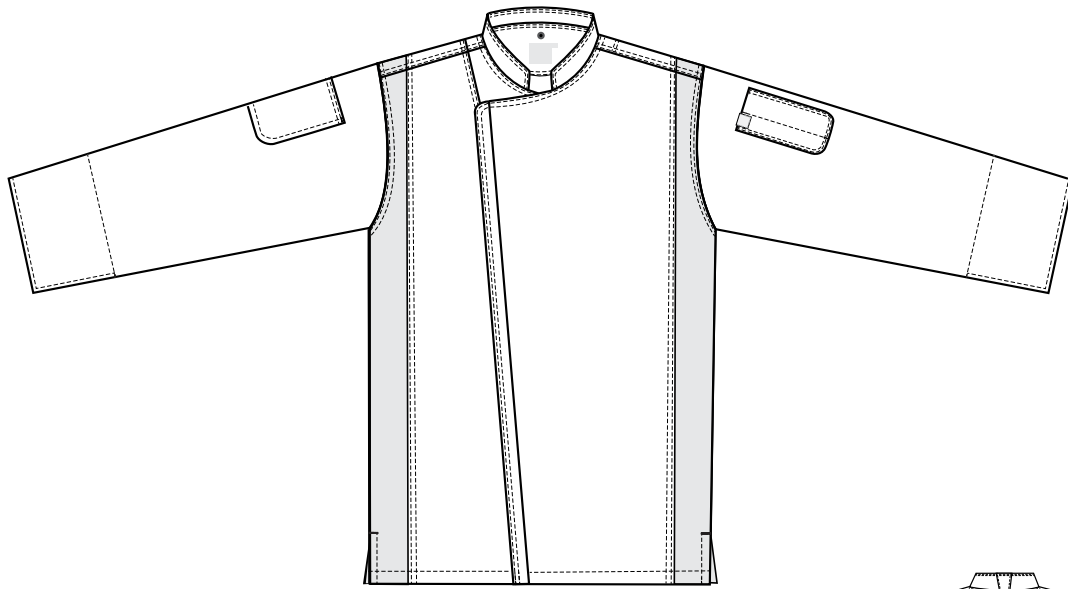
Side seam slits

MEN'S/UNISEX COATS (ALPHA)

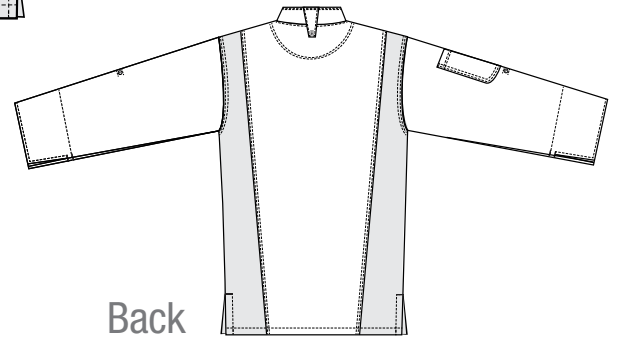
Chest (in)	32/34	36/38	40/42	44/46	48/50	52/54	56/58	60/62	64/66	68/70	72/74
Size	XS	S	M	L	XL	2XL	3XL	4XL	5XL	6XL	7XL
Chest (cm)	81/86	91/97	102/107	112/117	122/127	132/137	142/147	152/157	163/168	173/178	183/188

MF 1 Modern Fit | Tailored fit, cut slim through the chest and body.

HARTFORD



Front

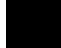
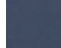


Back

BCLZ008

- 4.7 oz. 65/35 poly/cotton 'lite' twill fabric
- Cool Vent™ sides with side seam slits
- Single-breasted with zipper closure
- Back collar apron holder with engraved snap tab
- Roll-up long sleeve with tab
- Left sleeve thermometer pocket
- Right sleeve cell phone/notebook pocket
- Women's fit available

XS-3XL  GPG
(graphite)

XS-4XL  BLK (black)  BLU (blue)

XS-5XL  WHT
(white)

XS-6XL  GRY
(gray)

A staple in our Essentials Collection, the Hartford's single-breasted, zippered coat offers the wearer a complementary product at an affordable price point. Crafted in lightweight cotton twill with Cool Vent™ siding, the Hartford is the quintessential workhorse for your entire culinary staff. Offered in two new colors including white and gray for summer, this coat is best worn on well, any day that ends in "y."



800.372.6621 | www.chefworks.com

Chef Works Corporate Headquarters • 12325 Kerran Street • Poway, CA 92064